



MULTIMODAL ROAD SAFETY DATA PRODUCT

Rich insights for safer streets

Maximize road safety decisions with Vianova's Risk Aware Road Scoring module, merging diverse data sources for immediate road safety insights and evaluating safety measures' impact.

Rapid Insights

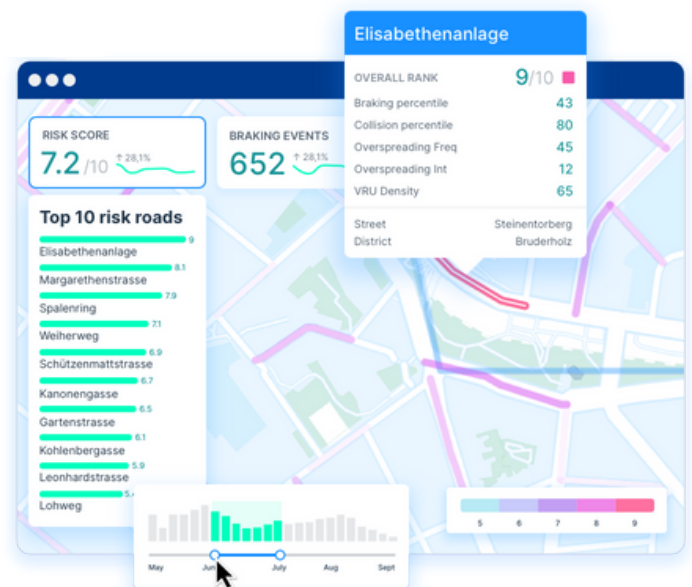
- Cut analysis time by 3-6 months, providing swift, actionable data.

Comprehensive Data Layers

- Harness 100+ data partnerships for multi-dimensional insights, including VRU and new data types.

Real-time Efficiency

- Receive live alerts, instant top 10 roads, and efficient filtering for proactive safety measures.



Uncover Safety Insights

Get deeper insights into street segments or networks, to identify potential crash-prone areas before incidents occur.

Understand Citywide Risk

Identify top high-risk road segments swiftly. Use multi-sorting and filtering to focus on problematic areas.

Evaluate Trends Over Time

Track metrics pre- and post-intervention, assessing impact on streets and nearby areas to prevent problem relocation.



OUR INSIGHTS

In urban road safety, cities traditionally prioritize, plan, execute, and then assess interventions. At Vianova, we innovate this process with data-driven support:

1

Proactive Risk Management:

Gain detailed visualizations and instant alerts to target critical areas, allowing smarter investments and targeted intervention to reduce risks and save lives.

2

Strategic Support for Execution:

Beyond data, we serve as strategic partners, analyzing VRU incidents and traffic patterns for more effective intervention paths, enhancing public safety efficiently.

3

Advanced Impact Analysis:

Integrating diverse data, including behaviors, provides a comprehensive intervention assessment, revealing true success metrics.

4

Intuitive Data Access:

Access user-friendly data visualization for clear insights. Simplified visuals and flexible time frames drive quick, informed decisions for all stakeholders.



By partnering with us, cities and organizations can expect to see a reduction in planning times by as much as six months, translating to cost savings and improved road safety outcomes sooner.

OUR DATA

Every Risk Aware score is customized based on data availability and the needs of the user. The scalability and tailoring are possible thanks to our data partners across the globe.

Mobility operators & micro-mobility



Telco & GPS data (pedestrian flows)



Telematic & Commercial vehicles (Probe data)



OEMs



Your Own Data



IoT data (air quality, charging stations, ...)



Geographies



EUROPE



US & CANADA



MIDDLE EAST

VIANOVA

The good data
to make cities greener

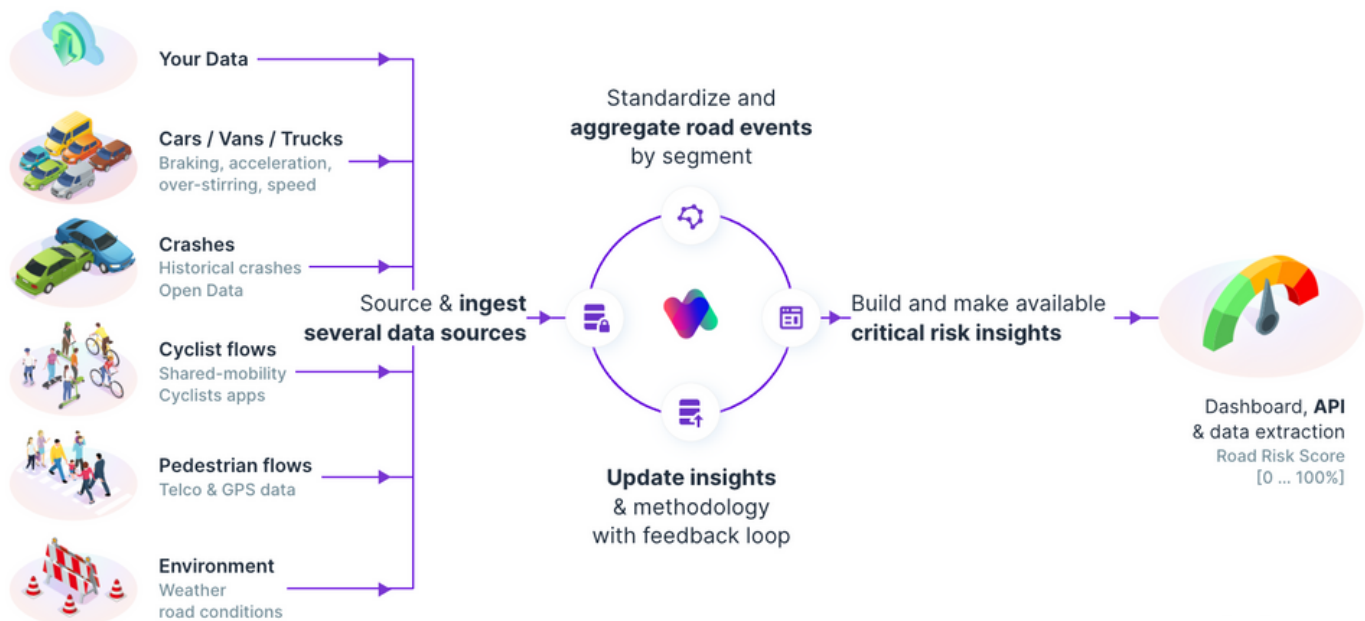


+33 7 56 80 17 48
inquiry@vianova.io



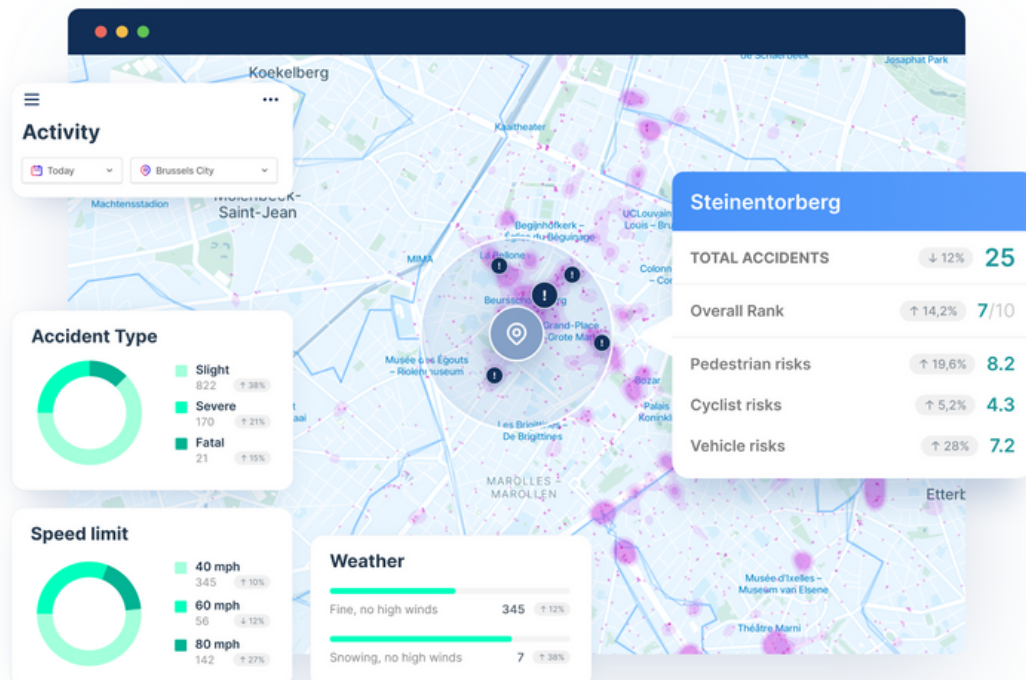
OUR RISK SCORE

Consolidate leading indicators into a comprehensive Risk Score for effective road segment classification. Get a fully customizable index, offering independent access to each risk factor.



A HOLISTIC VIEW

Gain insights from various data sources on a single platform, simplifying complex data into easy-to-use intelligence to make global transportation safer, greener, and more efficient.

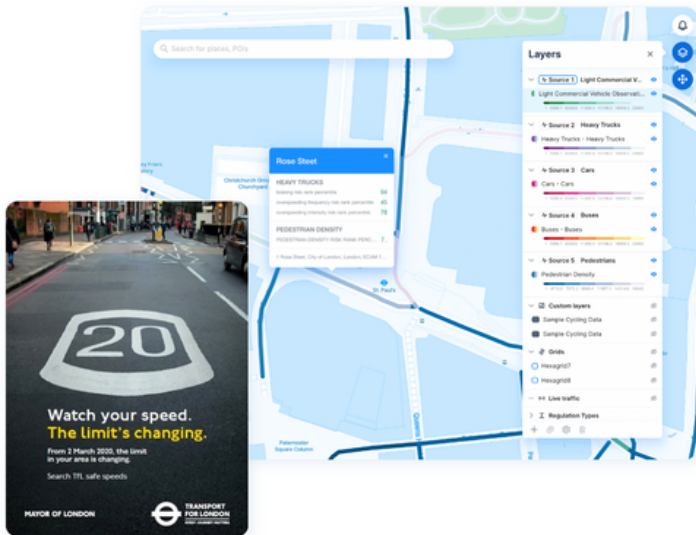




OUR SUCCESS STORIES

Let's explore real-life road safety success stories from our clients:

Transport For London



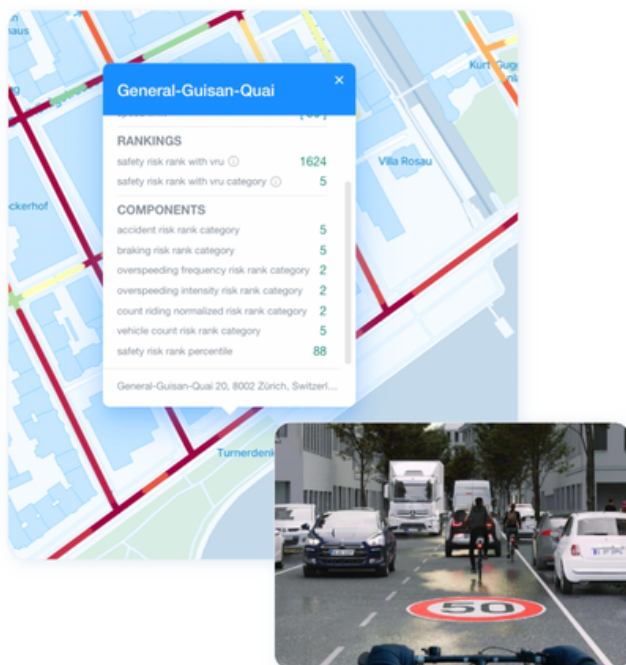
The Problem:

- 200km of roadway are being reduced to 20mph speed in order to achieve vision zero solutions, but monitoring an expansive network is too difficult with detection technology.

The Solution:

- TfL is using our "Risk Aware" solution to monitor harsh braking events, reductions in speeding, as well as the before-and-after effect of these "signs & lines" improvements on the increase in cycling and pedestrian traffic - aiming to reduce collisions and fatalities.

City of Zurich



The Problem:

- Annual road safety program based 100% on the location of historic collisions, a reactionary approach that won't achieve Vision Zero.

The Solution:

- Zurich used "Risk Aware" to identify three new traffic calming projects (markings, speed tables) for 2024 on roads without historic collisions but with speeding and vulnerable road user risks, and will monitor their effectiveness in reducing speeding and increasing shared mobility activity.