



# Vianova Intelligence Platform

## Technical Capabilities Overview

### DATA INTEGRATION & MANAGEMENT

#### Custom Data Upload

→ Seamless integration of CSV and GeoJSON files → Support for proprietary data formats and real-time data streams → Ideal for organizations with existing datasets or unique data requirements

#### Flexible Data Layering

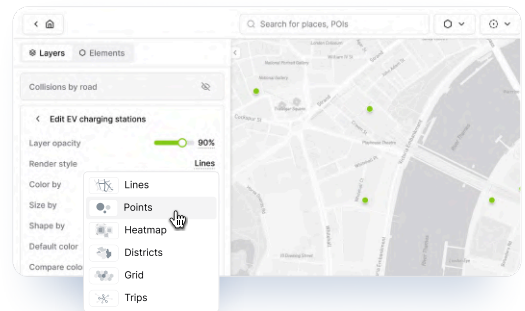
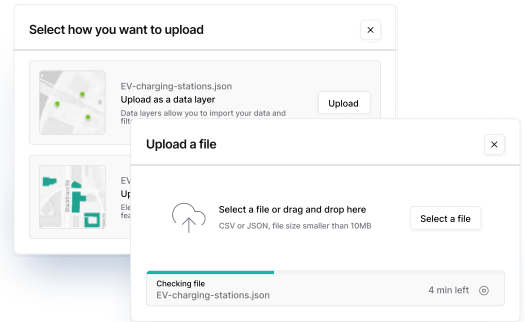
→ Multiple visualization options: points, heatmaps, cluster-buckets → Layer opacity and style controls for optimal data representation → Perfect for analyzing complex, multi-dimensional spatial data

#### Data Integration Features

→ Seamless CSV/Geojson integration or through custom API integrations → Real-time streaming capabilities for live data processing → Comprehensive alerting system for data anomalies and thresholds → Support for H3, road-based, and custom-shape aggregations

#### Geographic Management

→ Advanced map element controls for multiple geographies → Flexible boundary and area management



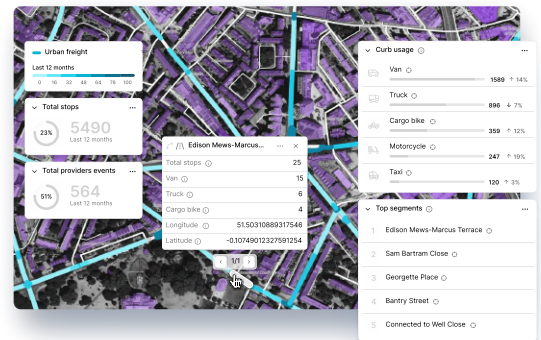
### DYNAMIC VISUALIZATION

#### Adaptive Rendering Engines

→ Real-time switching between visualization types (dots/heatmaps/clusters) → Performance-optimized rendering for large datasets → Essential for users working with high-volume spatial data

#### Interactive Widgets

→ Auto-generating data insights based on selected filters → Real-time updates reflecting current map view and selections → Valuable for analysts requiring immediate data feedback



### ANALYSIS TOOLS

#### Temporal Analysis

→ Before/after comparisons across any date range → Historical trend analysis capabilities → Critical for measuring impact and tracking changes over time

#### Geographic Filtering

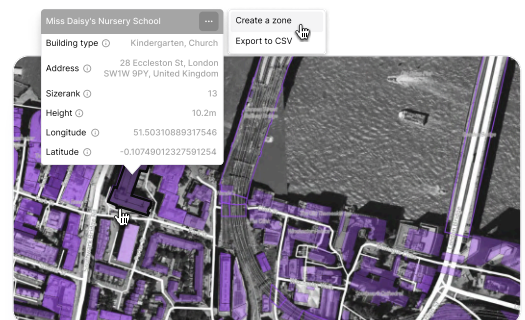
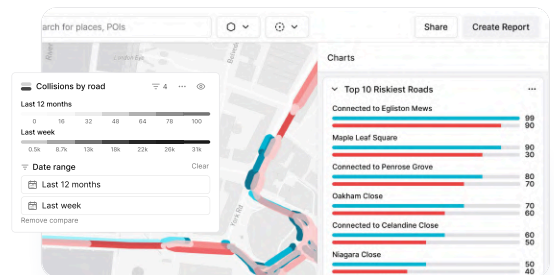
→ Custom element upload for geographic boundary definition → Conversion of elements into interactive spatial filters → Enables complex spatial queries and proximity analysis

#### Automated Insights

→ Top 10 rankings by various metrics → Auto-generated statistics for selected areas → Valuable for quick decision-making and reporting

#### Advanced Analytics

→ Road snapping functionality for precise route analysis → Origin/Destination (O/D) analytics for movement patterns → Custom report generation with PDF export capabilities



## REPORTING & COLLABORATION

→ Selective data masking for focused analysis → Points of interest highlighting → Ideal for stakeholder communication and decision-making

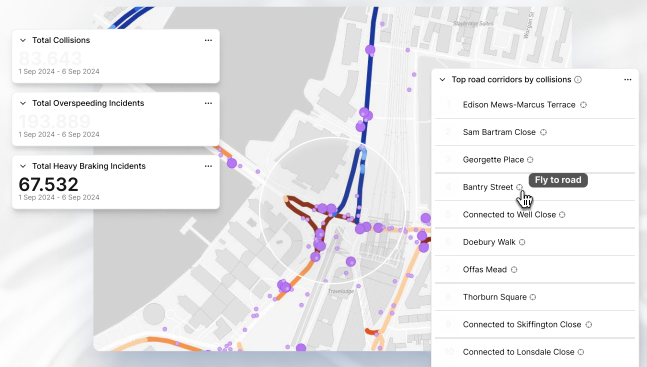
→ Proximity-based infrastructure assessment → Custom criteria evaluation (e.g., speed near schools) → Essential for urban planners and infrastructure managers



## INTERACTIVE MAP FEATURES

→ Widget-triggered map focusing and zooming → Instant geographic context for data insights → Optimizes workflow for rapid spatial analysis

→ User-defined polygonal zones with adjustable buffers → Precise area definition for targeted analysis → Essential for impact assessment and planning



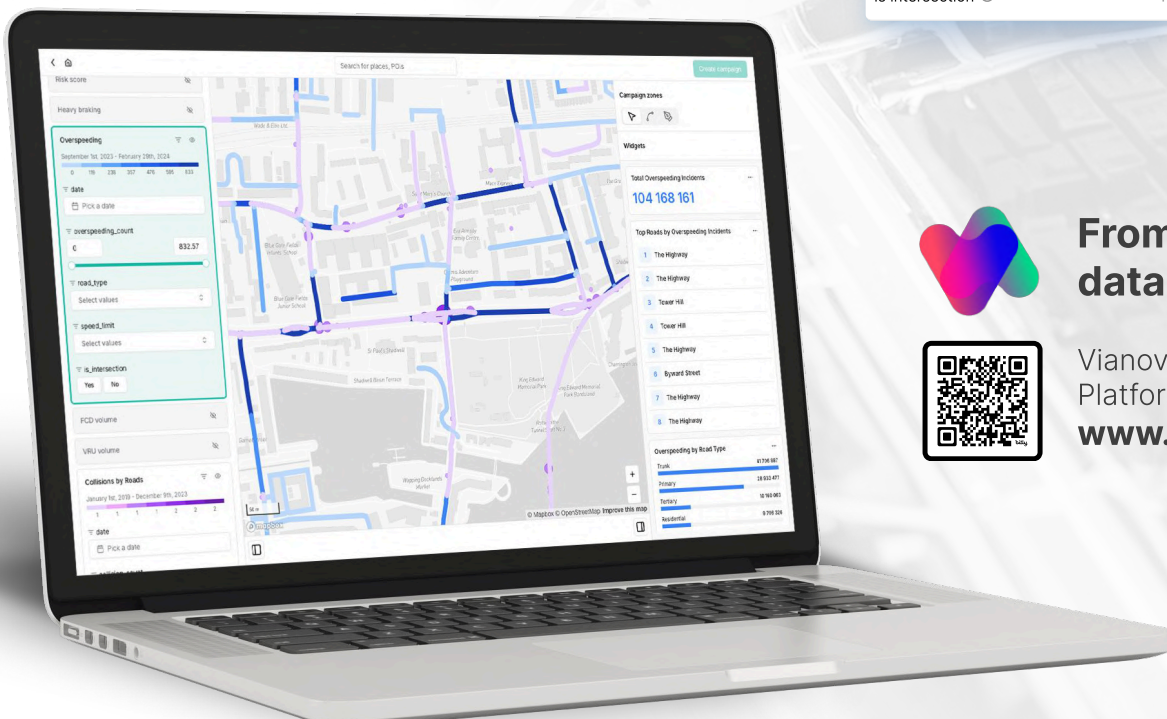
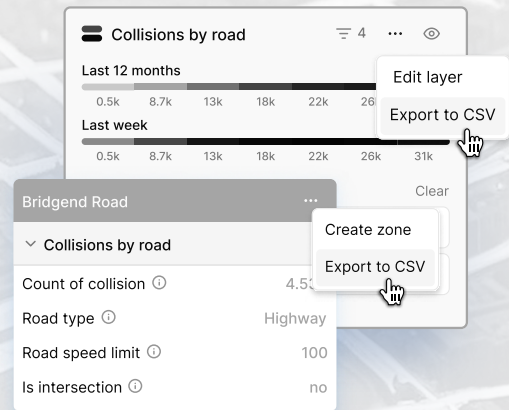
## DATA EXPORT & INTEGRATION

→ One-click export of filtered datasets → Compatible with external analysis tools → Enables seamless workflow integration

## INFRASTRUCTURE, SECURITY & ACCESS

→ AWS hosting options: → Multi-regional configuration → Segregated infrastructure options → Multi-cloud compatibility

→ Industry-standard security certifications and compliance, including SOC-2 → Role-Based Access Control (RBAC) implementation



**From mobility data to action**



Vianova Intelligence Platform  
**www.vianova.io**